



## IN THE PARK

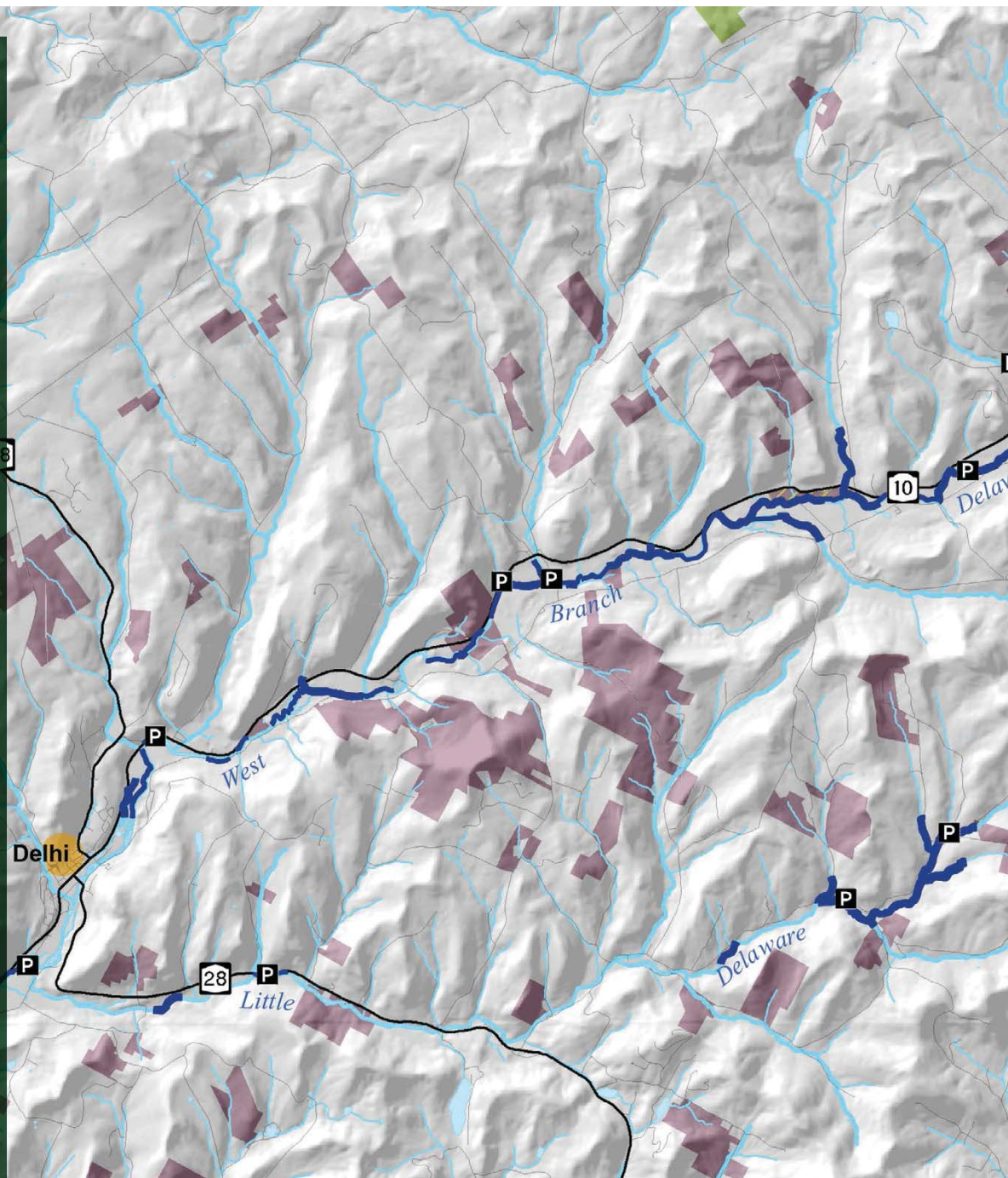
Preserve and the Catskill  
t. The Catskill Park is  
by the “blue line,” a  
The Preserve is state-  
wild” within the park.

Exceptional places for solitude  
icycles are not allowed.

e of recreation, including  
ountain biking. Some areas

campgrounds and day-  
swimming, fishing and

NYS Forest Preserve and NYC-  
and-use map. The information on  
possible. However, DEC does not  
se. Detailed information about  
at DEC or NYC Department  
[www.nyc.gov](http://www.nyc.gov) or [www.nyc.gov/dep](http://www.nyc.gov/dep)  
particular caution is advised where a  
consult with the local DEC or DEP















## THE PRESERVE *WITHIN*

Many people think the Catskill Forest Preserve and Catskill Park are the same thing, but they are not. The Preserve is a mix of public and private land, defined by the boundary the state established in 1904. It includes all state-owned land that is protected as “forever wild.”

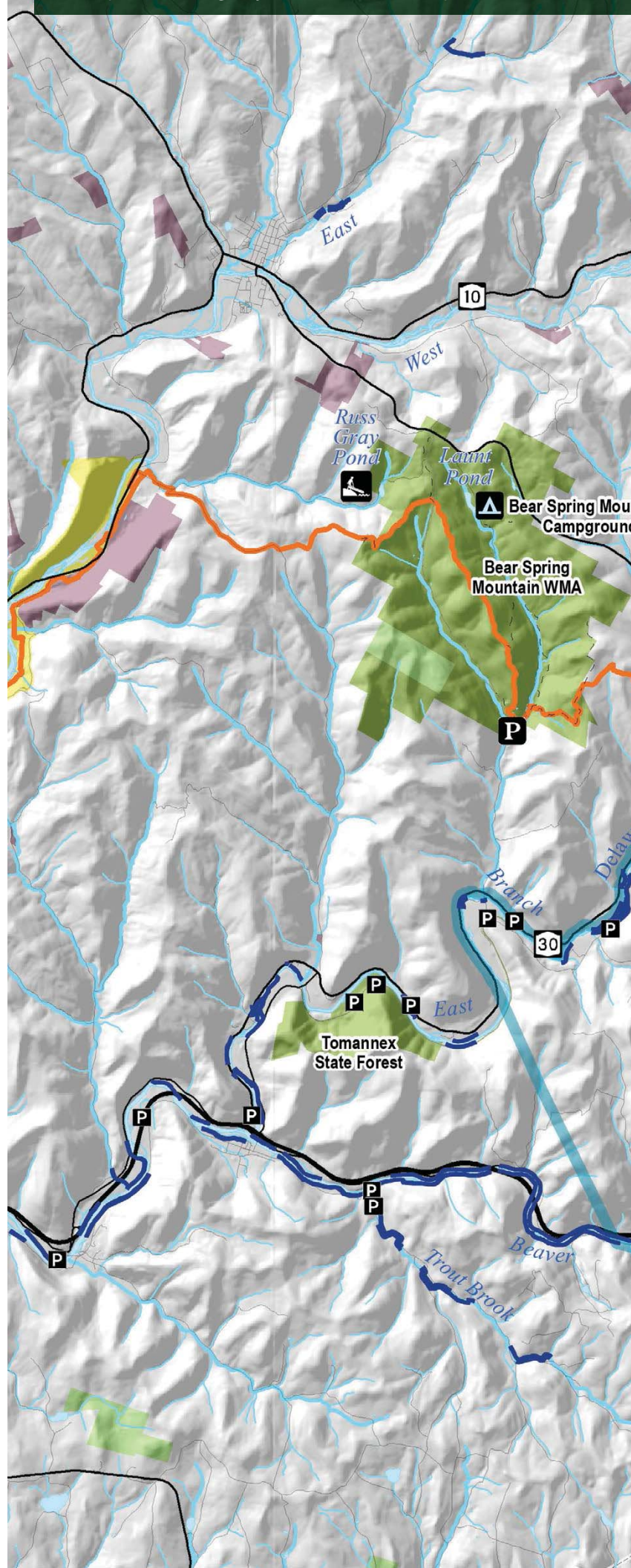
### PRESERVE LANDS INCLUDE:

- **Wilderness – About 143,000 acres**  
These areas, accessible by foot only, offer exceptional solitude in remote forest settings. Motor vehicles and bicycles are prohibited.
- **Wild Forest – About 130,000 acres**  
These areas provide settings for a wide range of recreational activities including hiking, camping, cross-country skiing and mountaineering. They also have snowmobile and horse trails.
- **State Recreation Areas – About 6,000 acres**  
These include Belleayre Mountain Ski Center, and several picnic and use areas. All offer picnicking, and some offer canoeing and car-top boat launches.

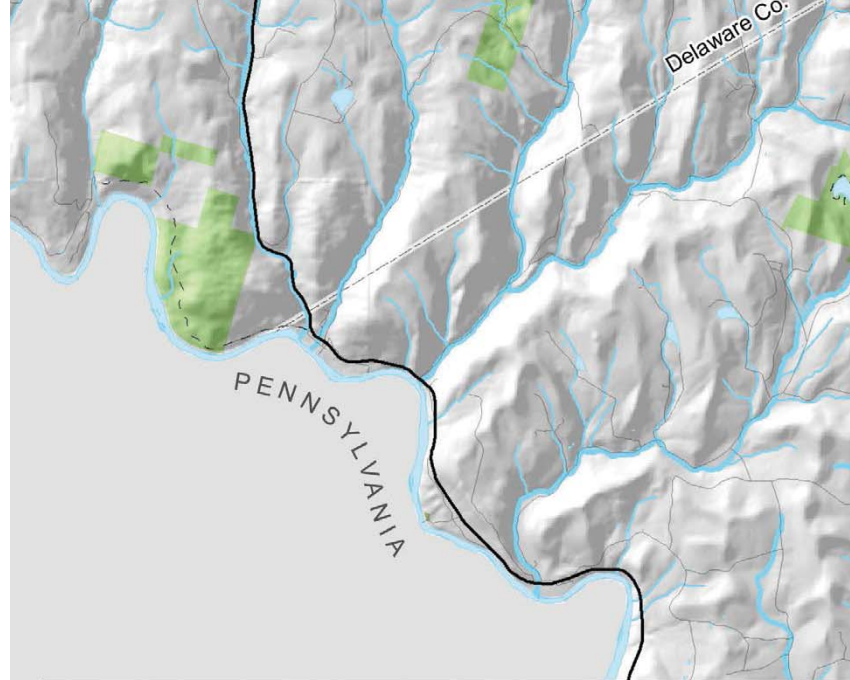
#### NOTICE:

This map is intended as an overview of places for recreation on state-owned lands within and near the Catskill Park. It is not a trail or land ownership map. It has been compiled from many sources and verified wherever possible. We cannot guarantee its accuracy and is not liable for its use for any purpose. A detailed map of specific NYS Forest Preserve and NYC-owned lands is available from the New York State Department of Environmental Protection (DEP) offices and online at [www.dec.ny.gov](http://www.dec.ny.gov) and [www.nyc.gov](http://www.nyc.gov), respectively. Trail conditions and land ownership may change. Please do not use a trail that crosses private land. Always check with the landowner and the appropriate agency office prior to using any trail which crosses private land.









Accessible Opportunity\*\*



Fishing Opportunity



Waterway Access Site\*  
(Car Top)



Environmental  
Education Camp\*



DEC Campground  
and Day Use Area\*



DEC Campground with  
Waterway Access\*



Visitor Information\*

Trail

Finger Lakes Trail

NYNJ Long Path Tr



Parking Area



Lean-to



Firetower



Waterfall



Angler Parking



Public Fishing Right



Gateway Community



DLF 11/2017